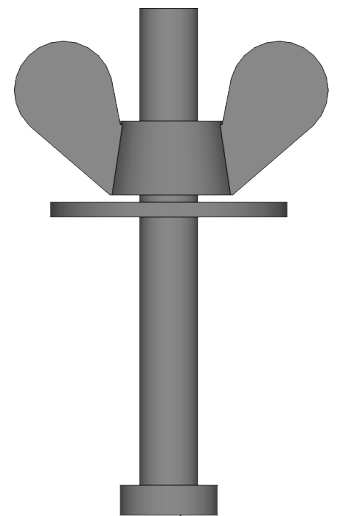
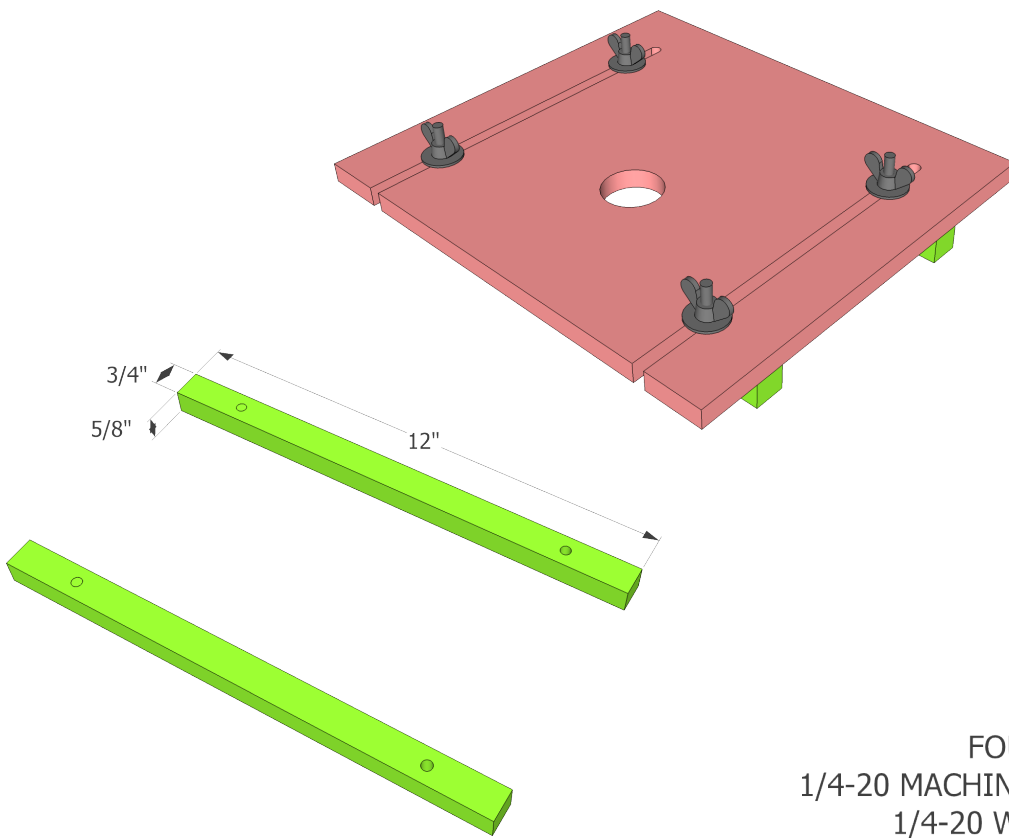
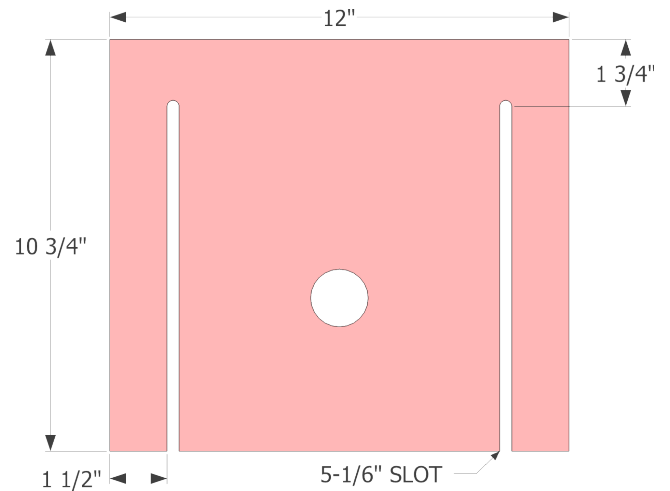


1. Cut 1/2" plywood base to size.
2. Cut adjustment slots in base.
3. Cut parallel guides to size.
4. Use base to mark holes in guides.
5. Drill 7/32" holes in parallel guides.
6. Drive 1/4-20 x 2" long machine screws into each hole in parallel guides.
7. Using existing base plate for your router mark the mounting screw locations and drill appropriate holes.
8. Drill 1-1/4" or similar hole where needed for the router bit.
9. Assemble jig by sliding guides on from below and securing them with a fender washer and wing nut.



FOUR EACH:
 1/4-20 MACHINE SCREW
 1/4-20 WING NUT
 1/4" FENDER WASHER

ROUTER EDGE GUIDE AND MORTISE JIG