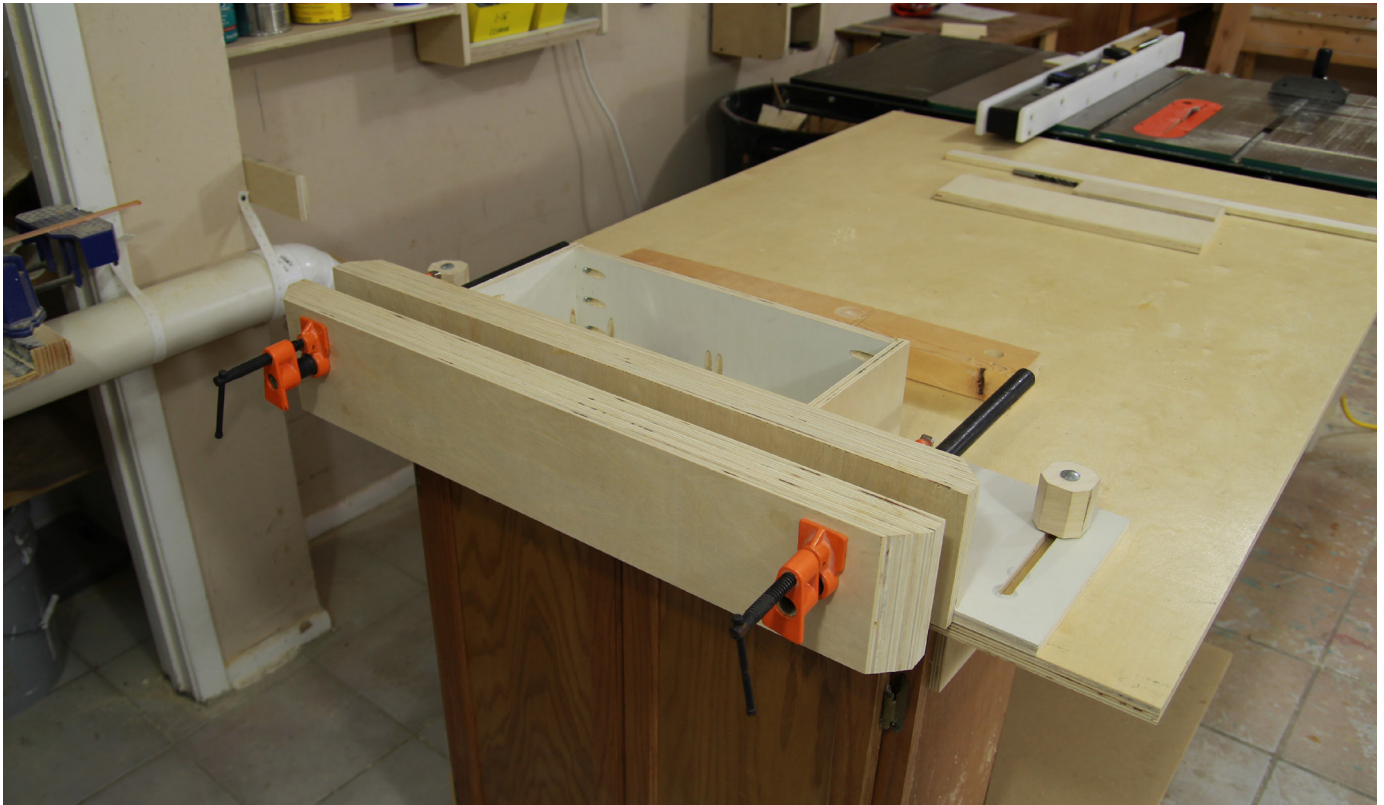


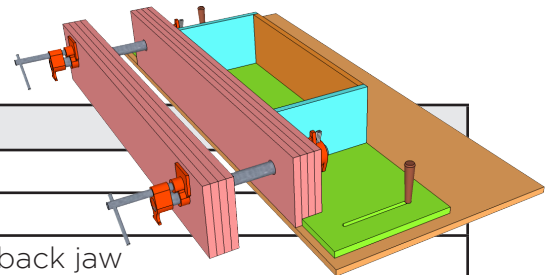
SLIDING MOXON VISE

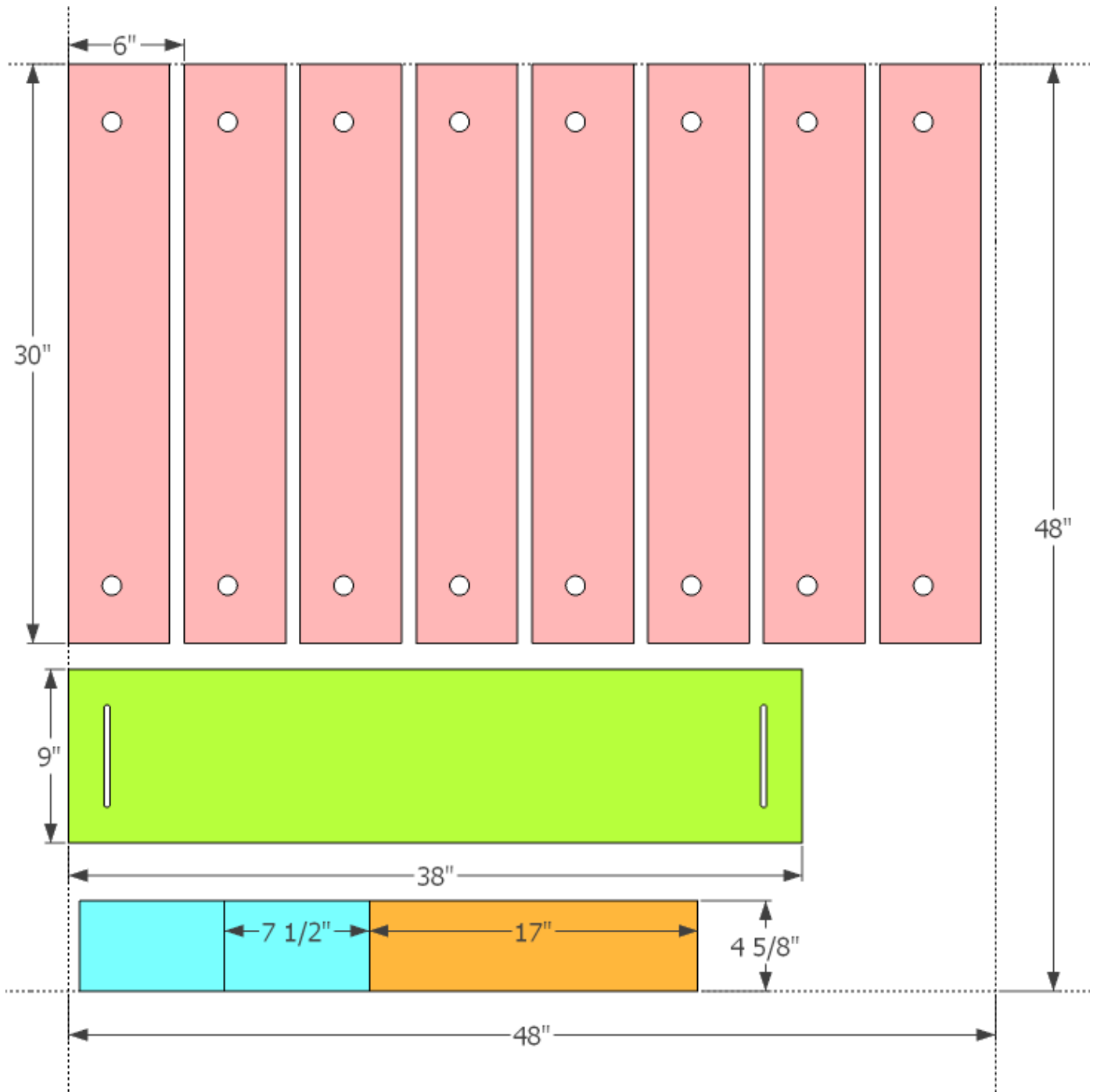
Copyright © 2014 JaysCustomCreations.com



Shopping List

Item	Quantity	Description
48" x 48" x 1/2" plywood	1	
1-1/4" pocket hole screws	handful	Optional box construction
Wood screws	handful	To secure the base to the back jaw
Wood glue		Sticky
1/2" pipe clamps	2	
1/2" pipe	2	Length is your choice, I used 15" pieces
5/16" x 3-1/2" carriage bolt	2	Or whatever size you choose
Matching size t-nut	2	To mount under your bench.
Scrap wood	2	Small pieces to make your handles
Beverage of choice	1 or 10	Reward



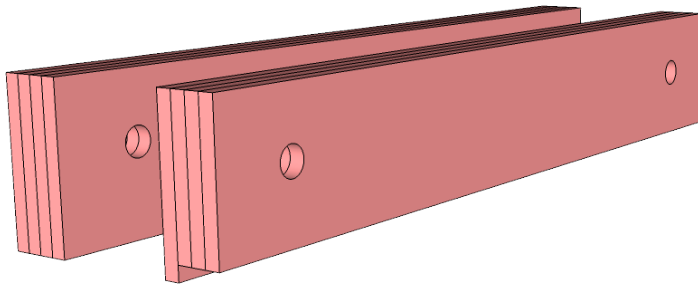
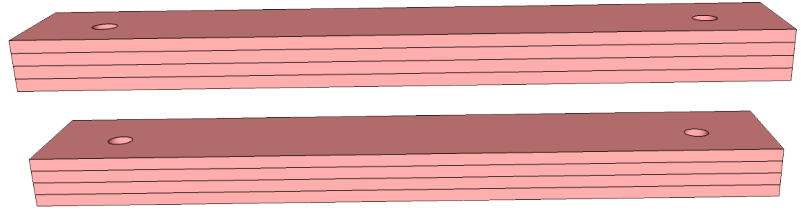


Cut your jaw strips at 6" wide before glue up. This will allow you to trim off the edges to get a perfect square edge. It may also help to cut them a little longer than 30".

1

Glue the jaw pieces together. Each glue-up should be four pieces thick.

After the glue has cured for an hour or two trim them square at 30" long by 5.25" tall.

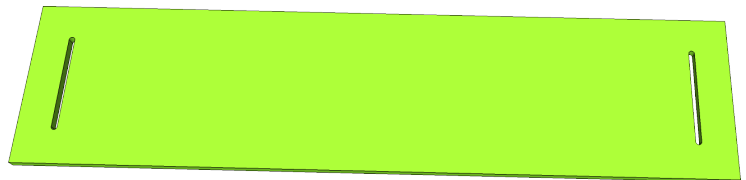


2

On one of the jaws cut a rabbet that is as wide as three pieces of the plywood and as tall as one piece of plywood. Also drill your pipe holes. The center point I used was 3" in from the ends and 2.25" down from the top. If you want the outer jaw to move easier you can turn the hole into a horizontal slot. I used a 7/8" bit for a 1/2" pipe clamp.

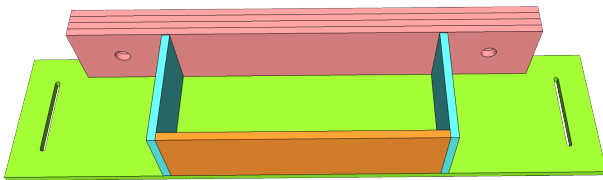
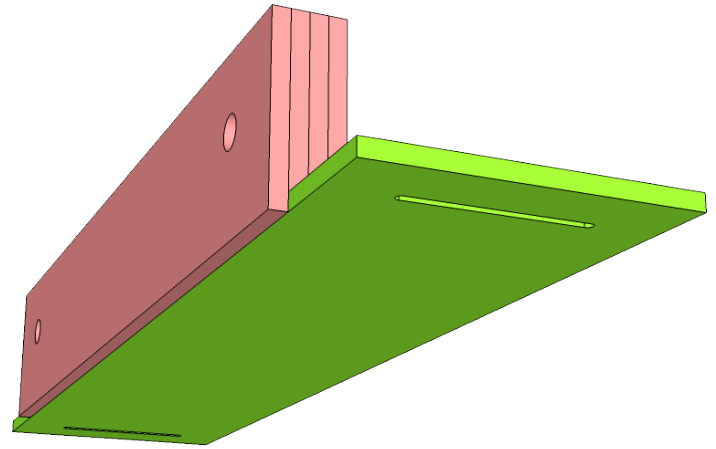
3

Drill two holes and connect them with a jigsaw to form a slot on your base piece. I used 5-1/8" carriage bolts so I made the slot about 1/2" wide. The slot is spaced 2" away from all edges.



4

Before assembly, make sure there will be enough clearance for your hand to use the hold down screws. If there isn't, chamfer the back edges of the back jaw and the front jaw to match (see video or cover page image). Glue and screw the base to the back jaw from below.



5

Assemble and attach the box to the base and back jaw. The main purpose of this is to act as a vertical brace for the back jaw but since it's wasted space lets just make it a small box to store hand tools. Use whatever joinery you choose. I used pocket hole screws because they are quick and easy.

6

Make whatever kind of handles you wish. I drove a 5/16" x 3-1/2" carriage bolt through an undersized hole on a 2" cube and chamfered the edges. With the front of the back jaw parallel with the edge of your bench drill a hole on the far ends of each slot to accept a t-nut from below. Add your handles and pipe clamps and enjoy your new vise.

